

A high-angle, close-up photograph of a dark-colored car's front left corner. The focus is on the front wheel, which has a multi-spoke alloy rim and a black tire with a visible tread pattern. To the right, the car's headlight and a portion of the front bumper are visible. The car is parked on a light-colored, textured pavement, possibly gravel or cobblestones. A dark blue, stylized graphic overlay is positioned in the lower-left quadrant of the image.

S
S FIT EQ

Laufenn

Journey in Style

When the Blue that represents rational value and the Red that represents emotional value meet, the Violet of Laufenn is born. Laufenn provides smart consumers both practical value and satisfaction.



Laufenn ensures an exceptional driving experience through optimized performance – In any weather or in any season, rain or snow, summer or winter.

Laufenn provides the performance you need over a wide range of conditions – in your everyday life, under any road conditions, on or off-road.

Confident

The ability Laufenn provides is rooted in its uncompromising commitment to quality. When you go to work or head out to meet your friends... When you go on a trip or venture out to a new place... Laufenn is there with you everyday providing optimized performance and confidence.

Simple

Laufenn is Simple – with no add-ons and nothing to spoil your driving experience. Committed to the basics, Laufenn offers a pure driving experience tailored to for your needs.

Open-minded

Laufenn refuses to accept a one-size-fits-all attitude. You know value when you see it and are determined to embrace new choices. Making Laufenn your choice is transforming your own value into a new trend.

Sensible

Laufenn understands your refined taste. You have an extraordinary eye for quality – all at a glance. Your choices are always solid. Laufenn expresses your excellent style and represents your fashionable personality.



S FIT EQ

Premium Ultra High Performance Summer Tyre



Wet



Dry



Fuel Efficiency

The S FIT EQ is designed for drivers looking for high speed driving at wet and dry conditions.



FEATURES

- **Asymmetric tread design**
- **Summer** : Optimized dry, wet performance
- **Long tread life**
- **Excellent stability and handling performance**
- **Quiet, smooth driving**

S FIT EQ

Speed Symbol : H~Y

S.W. : 185~255

Series : 35~65

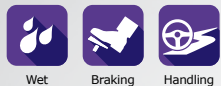
Inch : 15~19"

EU Label : C~E / C / 2W

Performance Information



Wet



An advanced asymmetric tread pattern enables excellent performance for any road or driving conditions.



Positive Aqua Hydro Block

An advanced Aqua Hydro Block design was developed through 3D Hydroplaning simulation to provide highly efficient wet braking.

Streamlined Kerf & Sipe

Streamlined Kerfs & Sipes provide highly efficient drainage in wet condition.

Drainage Inducement

Groove Edge

Drainage inducement Groove edges help to optimize an efficient wet braking.

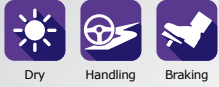


4 Channel Rib Type Design

4 Straight Groove design improves stability on wet road surfaces.



Handling & Cornering



The S FIT EQ helps drivers enjoy a comfortable drive by reducing noise and vibration.

INSIDE OUTSIDE
←-----→

Handling Performance

Even loads transfer vertically and laterally, they maintain a stable foot shape through an optimal design based on multiple tread radius profile & equilibrium carcass line.

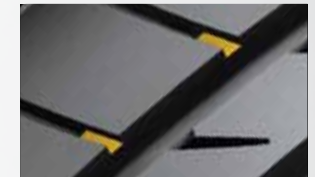


Traction force at Driving

Traction force at Cornering

Asymmetric Pattern Design

Advanced asymmetric pattern design helps to prevent road noise and increase cornering grip and maximize handling performance on dry roads.



Tie-Bar

Application of Tie-Bar Technologies ensures optimal Block Stiffness.

Cornering & Noise

Reduction Rib

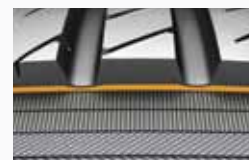
A straight Rib Block applied to the outside of the tyre helps to prevent road noise and increase cornering grip.



Wear Life



The S FIT EQ is designed for smart drivers like you, who want to ensure both longer wear life and higher fuel efficiency.

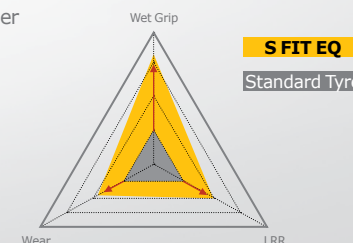


Special Rubber Layer

The tread pattern and special rubber structure minimize rotational resistance and maximize fuel efficiency.

New Hybrid Compound

The use of high-performance polymer compounds easily able to handle 3-dimensional movement reduces rotational resistance and increases tyre wear life.

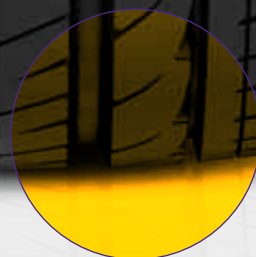


Long Mileage and Even Tread Wear

An optimized tyre profile designed by advanced computer-aided simulation improves braking performance and wear by evenly distributing weight over the tyre's contact patch.

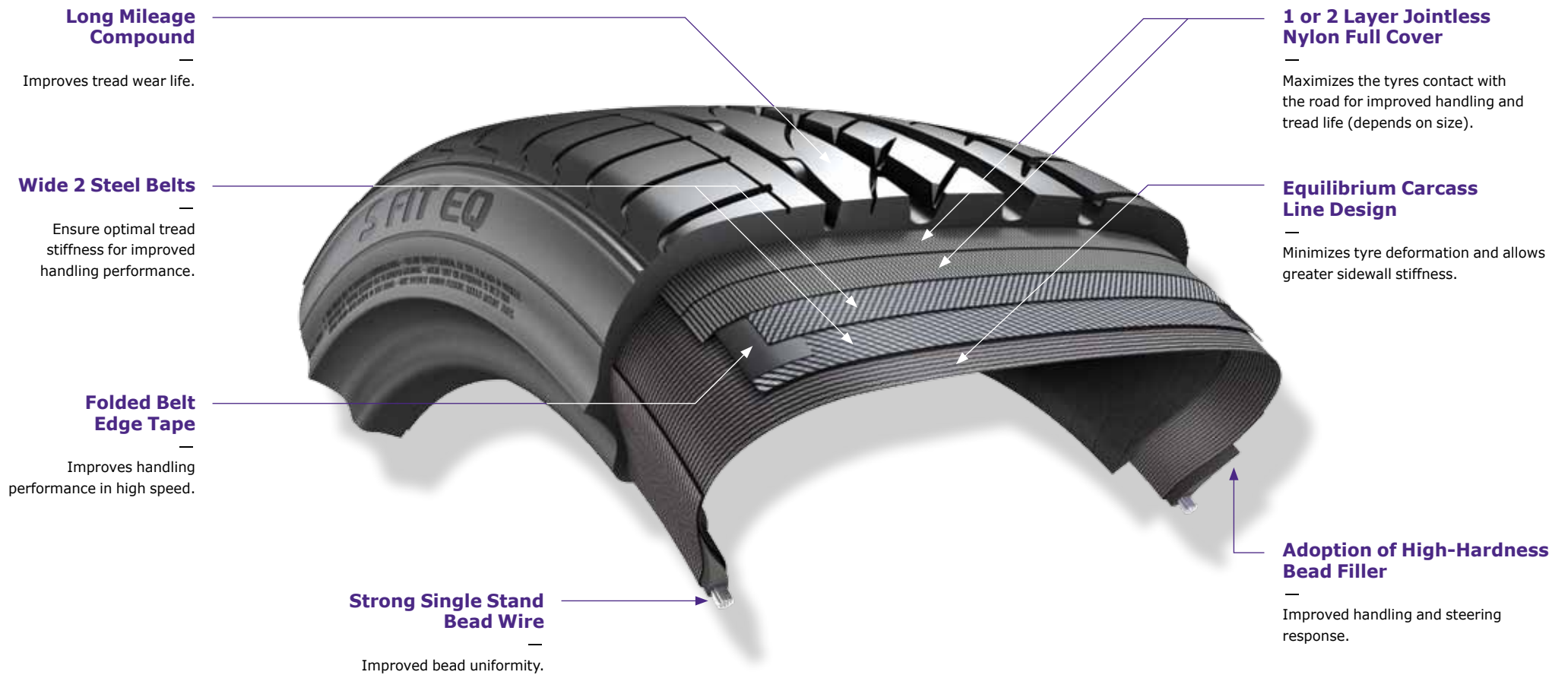


EVEN PRESSURE



TYRE STRUCTURE

The S FIT EQ adopts new technology for premium vehicles, engineered for exceptional control and a quiet and comfortable ride.



* The model size in the structural diagram is for the 225/45ZR18Y XL tyre, and the descriptions of structural diagrams may vary by size.

AVAILABLE SIZES

35 Series

Size	LI & SS	Label		
		RR	Wet grip	dB
255/35ZR18Y XL	94Y			
225/35ZR19Y XL	88Y			
235/35ZR19Y XL	91Y			
255/35ZR19Y XL	96Y			

40 Series

Size	LI & SS	Label		
		RR	Wet grip	dB
225/40ZR18Y XL	92Y			
235/40ZR18Y XL	95Y			
245/40ZR18Y XL	97Y			
245/40ZR19Y XL	98Y			

45 Series

Size	LI & SS	Label		
		RR	Wet grip	dB
195/45R16V XL	84V			
205/45R16V	83V			
205/45ZR16W	83W			
205/45ZR17W XL	88W			
215/45ZR17W XL	91W			
215/45ZR17Y XL	91Y			
225/45R17V XL	94V			
225/45ZR17Y XL	94Y			
235/45ZR17Y XL	97Y			
225/45ZR18Y XL	95Y			
245/45ZR18Y XL	100Y			

50 Series

Size	LI & SS	Label		
		RR	Wet grip	dB
195/50R15H	82H			
195/50R15V	82V			
195/50R16V	84V			
205/50ZR16W	87W			
205/50ZR17W XL	93W			
215/50ZR17W XL	95W			
225/50ZR17Y XL	98Y			

55 Series

Size	LI & SS	Label		
		RR	Wet grip	dB
185/55R15H	82H			
185/55R15V	82V			
195/55R15H	85H			
195/55R15V	85V			
195/55R16H	87H			
195/55R16V	87V			
205/55R16H	91H			
205/55R16V	91V			
205/55R16V XL	94V			
205/55ZR16W	91W			
215/55R16V	93V			
215/55ZR16W XL	97W			
225/55R16V	95V			
225/55ZR16W XL	99W			
225/55ZR17W XL	101W			

60 Series

Size	LI & SS	Label		
		RR	Wet grip	dB
195/60R15V	88V			
195/60R15H	88H			
205/60R15V	91V			
205/60R15H	91H			
205/60R16V	92V			
215/60R16H XL	99H			
235/60R18V XL	107V			

65 Series

Size	LI & SS	Label		
		RR	Wet grip	dB
195/65R15V	91V			
205/65R15H	94H			
235/65R17V XL	108V			

* LI : Load Index / SS : Speed Symbol / RR : Rolling Resistance / dB : Decibel

Laufenn

Siemensstraße 5A,
63263 Neu-Isenburg, Germany
Tel. 49-6102-8149-0 / Fax. 49-6102-8149-100